

Light Curable Epoxy Material

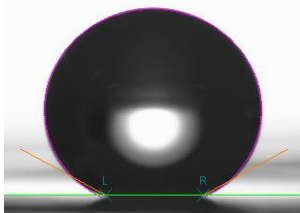
OEX-066-X1-3

◇ General specifications

Curable Wavelength	<365 nm
Specific Gravity	1.1
Viscosity	60~150 cps at 23°C
Shrinkage on Cure	5~8 %
Pencil Hardness (flat film)	8~9H
(moth-eye structure)	3~4H
Reflective Index (nD25)	1.50~1.51
Hardness (shore D)	75~84

- All values in typical.
- Curing condition: Exposure doze 6,000mJ/cm² (50mW/cm² x 120sec)
- Light Source: Metal Halide Lamp
- Storage condition: Cool and dark place (below 15°C)
- Return to room temperature in using.

◇ Antifouling Property (on Moth-eye AR structure)



Water Contact Angle

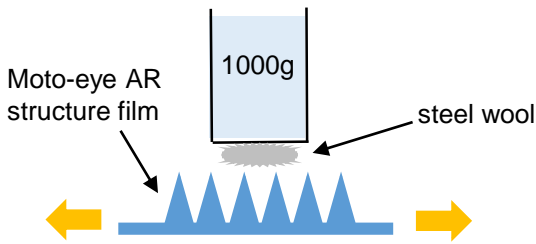
151.4°

Super hydrophobic !

◇ Scratch Resistance (on Moth-eye AR structure)

rubbing with steel wool

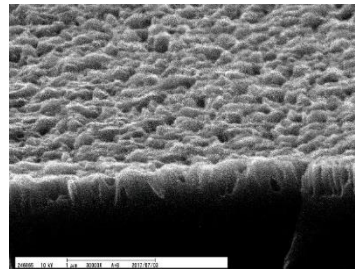
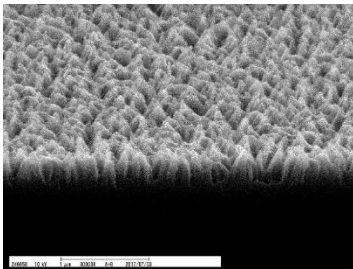
Test Condition



Steel Wool	#0000
Rubbing times	10 times
Load	1000gF
Load/cm ²	250g/cm ²

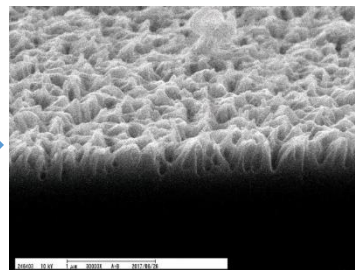
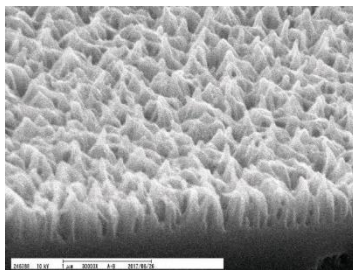
Test Result

conventional resin

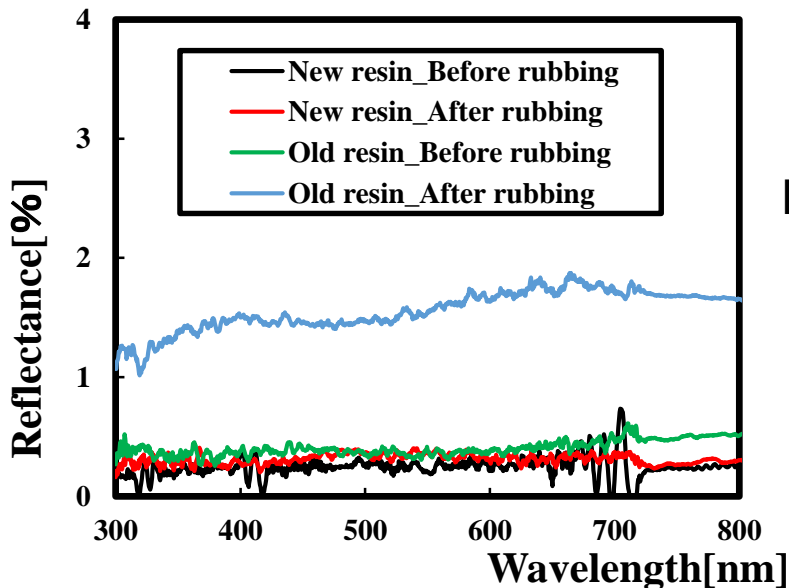


Moth-eye
AR structure
Broken !

New resin OEX-066-X1-3



Moth-eye
AR structure
Maintained !



Low reflectivity
Maintained !